



export catalogue

*water / gas / heating
fittings / arco sistemas*

2010-2011



**ANGLE, WASHING MACHINE
& MINI VALVES**

GARDEN TAPS

**BALL VALVES
FOR WATER**

**WATERMETER VALVES
& CONNECTIONS**

**CHECK VALVES, GATE VALVES
& FILTERS**

EMBEDDED VALVES

**THERMOSTATIC & MANUAL
RADIATOR VALVES**

GAS VALVES

FITTINGS





VÁLVULAS ARCO

Founded in 1973 by José Ferrer, ARCO is a familiar company with the main target of "producing quality", and it has been incorporating and personalizing the highest technology to follow the requests of its clients.

In fact, in 1975, only two years after its foundation, the company Válvulas ARCO already had a wide range of manufacturing products, as water valves, gas valves and heating valves.

In 1980, ARCO created its unique model of angle valve, the A-80, with quarter turn opening and closing, making ARCO known in more than 100 countries around the world.

Since then, ARCO has been increasing the volume of business and markets where it is placed, also capital and technical investments. Therefore, the company is leader in the national and european market and one of the top five companies worldwide, producing more than 4 million valves monthly.

This success has not stopped the constant flow to innovation, which has allowed ARCO to keep developing new products asked by the demand of clients. With this, in 2008 ARCO creates ARCO Systems, the new business line to design, develop and commercialize global systems for water supply and air conditioning installations. Through this new line, ARCO offers multilayer pipes, cross-linked polyethylene pipe, fittings, tools and safety valves, all of them with a main target: quality, safety and simplicity.



Iberia

ISO 14001
Company certified



Iberia

ISO 9001:2000
Company certified

A-8o

ANGLE VALVES 1/4 TURN SYSTEM



A-80 DESIGN

ANGLE VALVE, BALL VALVE CLOSURE, DOUBLE O'RING,
PATENTED SYSTEM, PN 16 BAR



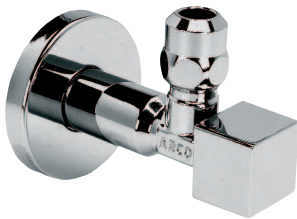
A-80 TECH

Code	Size	Nut	Finishing	Inner Box	Outer Box
2TECH	1/2"M x 3/8"M	Without Nut	Extra Polished	1	50
1TECH	1/2"M x 3/8" x 10	Long	Extra Polished	1	50
25TECH	1/2"M x 3/8" x 10	Long + Ring	Extra Polished	1	50
5TECH	1/2"M x 1/2"M	Without Nut	Extra Polished	1	50
2TECHNPT	1/2"NPT x 3/8"OD	Without Nut	Extra Polished	1	50



A-80 STAR

Code	Size	Nut	Finishing	Inner Box	Outer Box
2STAR	1/2"M x 3/8"M	Without Nut	Extra Polished	1	50
1STAR	1/2"M x 3/8" x 10	Long	Extra Polished	1	50
5STAR	1/2"M x 1/2"M	Without Nut	Extra Polished	1	50



A-80 CUBO

Code	Size	Nut	Finishing	Inner Box	Outer Box
2CUBO	1/2"M x 3/8"M	Without Nut	Extra Polished	1	50
1CUBO	1/2"M x 3/8" x 10	Long	Extra Polished	1	50
5CUBO	1/2"M x 1/2"M	Without Nut	Extra Polished	1	50
2CUBONPT	1/2"NPT x 3/8"OD	Without Nut	Extra Polished	1	50



A-80 CLASICA

Code	Size	Nut	Finishing	Inner Box	Outer Box
2CLAS	1/2"M x 3/8"M	Without Nut	Extra Polished	1	50
1CLAS	1/2"M x 3/8" x 10	Long	Extra Polished	1	50
5CLAS	1/2"M x 1/2"M	Without Nut	Extra Polished	1	50

A-80

ANTILIME SOLUTIONS

ANGLE VALVE, BALL VALVE CLOSURE, DOUBLE O'RING,
PATENTED SYSTEM, PN 16 BAR



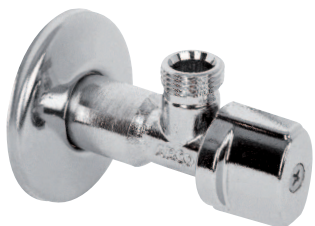
A-80 MAC NOVA METAL Handle With NUT

Code	Size	Nut	Finishing	Inner Box	Outer Box
NOV78MAC	1/2"M x 3/8"M x 10	Long Nut	Polished Chrome	1	100



A-80 LONG MAC NOVA METAL Handle Without NUT

Code	Size	Nut	Finishing	Inner Box	Outer Box
NOV88MAC	1/2"M x 3/8"M	Without Nut	Chrome	1	100



A-80 MAC NOVA METAL Handle Without NUT

Code	Size	Nut	Finishing	Inner Box	Outer Box
NOV76MAC	1/2"M x 3/8"M	Without Nut	Chrome	2	100
NOV77MAC	1/2"M x 3/8"M	Without Nut	Chrome / Indiv. Box	1	100
NOV91MAC	1/2"M x 1/2"M	Without Nut	Chrome	2	100
NOV92MAC	1/2"M x 1/2"M	Without Nut	Chrome / Indiv. Box	1	100



A-80 MAC NOVA METAL Handle With NUT

Code	Size	Nut	Finishing	Inner Box	Outer Box
NOV75MAC	1/2"M x 3/8" x 10	Short	Chrome	2	100
NOV90MAC	1/2"M x 1/2" x 12	Short	Chrome	2	100



A-80 ASAG MAC NOVA METAL Handle With NUT ANTILIME System

Code	Size	Nut	Finishing	Inner Box	Outer Box
NOV79MAC	1/2"M x 3/8"M x 10	Long Nut	Polished Chrome	1	100

ANGLE VALVE, BALL VALVE CLOSURE, DOUBLE O'RING,
PATENTED SYSTEM, PN 16 BAR



A-80 ASAG MAC NOVA METAL Handle Without NUT

Code	Size	Nut	Finishing	Inner Box	Outer Box
NOV81MAC	1/2"M x 3/8"M	Without Nut	Chrome	1	100



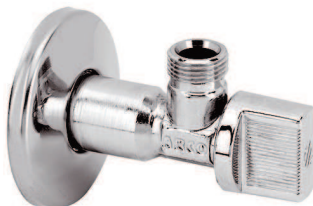
MINI with FILTER

Code	Size	Nut	Finishing	Inner Box	Outer Box
02400MAC	1/2"M x 1/2"M	Whithout Nut	Chrome	1	50
02402MAC	1/2"M x 3/8"M	Whithout Nut	Chrome	1	50



A-80 ASAG NOVA Handle

Code	Size	Nut	Finishing	Inner Box	Outer Box
NV753	1/2"M x 3/8" x 10	Short	Chrome	1	100



A-80 ORIGINAL Handle 80 WITHOUT NUT

Code	Size	Nut	Finishing	Inner Box	Outer Box
00707	1/2"M x 3/8"M	Without Nut	Chrome	2	100
P0710	1/2"M x 1/2"M	Without Nut	Chrome	2	100



A-80 ORIGINAL Handle 80 WITH NUT

Code	Size	Nut	Finishing	Inner Box	Outer Box
00702	1/2"M x 3/8" x 10	Short	Chrome	2	100
P0742	1/2"M x 3/8" x 10	Long	Chrome	1	100
P0713	1/2"M x 3/8" x 10	Long	Polished Chrome	1	100
PB713	1/2"M x 3/8" x 10	Long	Polish.Chrom./Sleeve	1	100

A-80

ANGLE VALVE, BALL VALVE CLOSURE, DOUBLE O'RING,
PATENTED SYSTEM, PN 16 BAR



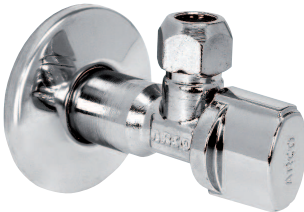
A-80 ORIGINAL METAL 80 Handle

Code	Size	Nut	Finishing	Inner Box	Outer Box
00777	1/2"M x 3/8" x 10	Long	Chrome + Index	1	100
PZ725	1/2"M x 1/2"M	Without Nut	Chrome	1	100



A-80 ORIGINAL NOVA Handle WITHOUT NUT

Code	Size	Nut	Finishing	Inner Box	Outer Box
NOV31	3/8"M x 3/8"M	Without Nut	Chrome	2	100
NOV21	1/2"M x 3/8"M	Without Nut	Chrome	2	100
NOV01	1/2"M x 1/2"M	Without Nut	Chrome	2	100
NOV06	1/2"M x 1/2"M	Without Nut	Chrome	1	100



A-80 ORIGINAL NOVA Handle WITH NUT

Code	Size	Nut	Finishing	Inner Box	Outer Box
NOV30	3/8"M x 3/8" x 10	Short	Chrome	2	100
NO743	3/8"M x 3/8" x 10	Long	Chrome	1	100
NOV20	1/2"M x 3/8" x 10	Short	Chrome	2	100
NOV742	1/2"M x 3/8" x 10	Long	Chrome	1	100
NOV07	1/2"M x 1/2" x 10	Short	Chrome	2	100
NOV32	1/2"M x 1/2" x 12	Short	Chrome	2	100



A-80 POLISHED NOVA Handle

Code	Size	Nut	Finishing	Inner Box	Outer Box
NOV05	1/2"M x 3/8"M	Without Nut	Polished Chrome	1	100
NOV03	1/2"M x 3/8" x 10	Short	Polished Chrome	1	100
NOV02	1/2"M x 1/2"M	Without Nut	Polished Chrome	1	100



A-80 LONG NOVA Handle

Code	Size	Nut	Finishing	Inner Box	Outer Box
NV092	1/2"M x 3/8" x 10	Long	Chrome	1	80

A-80

ANGLE VALVE, BALL VALVE CLOSURE, DOUBLE O'RING,
PATENTED SYSTEM, PN 16 BAR



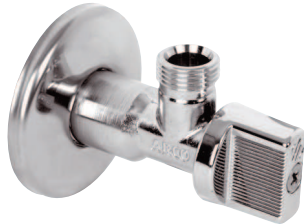
A-80 ORIGINAL LUXE METAL Handle

Code	Size	Nut	Finishing	Inner Box	Outer Box
LP740	1/2"M x 3/8" x 10	Long	Polished Chrome	1	50
LP730	1/2"M x 1/2"M	Without Nut	Polished Chrome	1	50



A-80 SHORT FEMALE NOVA Handle

Code	Size	Nut	Finishing	Inner Box	Outer Box
NV715	3/8"F x 3/8" x 10	Short	Chrome	1	120
NV716	1/2"F x 3/8" x 10	Short	Chrome	1	120



DELTA 80 Handle

Code	Size	Nut	Finishing	Inner Box	Outer Box
DE600	1/2"M x 3/8"M	Without Nut	Chrome	5	100
DE610	1/2"M x 3/8" x 10	Short	Chrome	5	100
DE700	1/2"M x 1/2"M	Without Nut	Chrome	5	100



A-80 SHORT MALE LUXE METAL Handle

Code	Size	Nut	Finishing	Inner Box	Outer Box
ARL20	1/2"M x 1/2"M	Without Nut	Chrome	1	100



A-80 SHORT MALE ASAG VERTICAL TRADITIONAL Handle

Code	Size	Nut	Finishing	Inner Box	Outer Box
VE001	1/2"M x 3/8" x 10	Short	Chrome	1	100
VE005	1/2"M x 3/8"	Without Nut	Chrome	1	100

A-80

ANGLE VALVE, BALL VALVE CLOSURE, DOUBLE O'RING, PATENTED SYSTEM, PN 16 BAR



NEW

A-80 F NOVA Handle WITH ADAPTER

Code	Size	Finishing	Inner Box	Outer Box
00741	3/8"M x 3/8" SN	Chrome	100	200
NF741	3/8"M x 3/8" SN	Chrome	100	200
AR741	3/8"M x 3/8" SN	Chrome	100	200
NFAR741	3/8"M x 3/8" SN	Chrome	100	200



NEW

A-80 F COMPRESSION NOVA Handle

Code	Size	Finishing	Inner Box	Outer Box
00722	3/8"M x 10 x 3/8" SN	Chrome	50	100
FR723	3/8"M x 12 x 3/8" SN	Chrome	50	100



A-80 F 80 Handle

Code	Size	Finishing	Inner Box	Outer Box
00720	3/8"M x 3/8" SN	Chrome	100	200
00721	3/8"M x 3/8" SN	Rough	100	200



ZENIT

Code	Size	Nut	Finishing	Inner Box	Outer Box
ZP702	1/2" x 3/8" x 10	Short	Chrome	1	100
Z0912	1/2" x 1/2"	Whithout Nut	Chrome	1	100



DELTA F

Code	Size	Nut	Inner Box	Outer Box
DE720	3/8"M x 3/8"M	Without Nut	100	200
DE741	3/8"M x 3/8"M	Without Nut	100	200
DE722	3/8"M x 3/8"M	Short	50	200

A-80

ANGLE VALVE, BALL VALVE CLOSURE, PATENTED SYSTEM, PN 16 BAR

kiwa



A-80 KIWA TRADITIONAL Handle

Code	Size	Nut	Finishing	Inner Box	Outer Box
K0742	1/2"M x 3/8" x 10	Long + Ring	Chrome	1	100

kiwa



A-80 KIWA SHORT TRADITIONAL Handle

Code	Size	Nut	Finishing	Inner Box	Outer Box
K0791	1/2"M x 3/8"M	Without Nut	Rough	1	200
K0793	1/2"M ASAG x 3/8"M	Without Nut	Rough	50	100



A-80 FILTER 80 Handle

Code	Size	Nut	Finishing	Inner Box	Outer Box
00738	1/2"M x 3/8"M	Without Nut	Chrome	1	50
00735	1/2"M x 3/8" x 10	Long	Chrome	1	50
FI777	1/2"M x 1/2"M	Without Nut	Chrome	1	50
00444	1/2"M x 3/4"M	Without Nut	Chrome	1	50



MINI with FILTER

Code	Size	Nut	Finishing	Inner Box	Outer Box
02402G	1/2"M x 3/8"M	Whithout Nut	Chrome	1	50
02401G	1/2"M x 3/8" x 10	Short	Chrome	1	50
02400G	1/2"M x 1/2"M	Whithout Nut	Chrome	1	50



DELTA MINI with FILTER

Code	Size	Nut	Finishing	Inner Box	Outer Box
02400DE	1/2" x 1/2"	Whithout Nut	Chrome	1	50
02402DE	1/2" x 3/8"	Whithout Nut	Chrome	1	50

A-80

ANGLE VALVE, BALL VALVE CLOSURE, PATENTED SYSTEM, PN 16 BAR



A-80 UPC Angle Stop OD Compression x OD Compression

Code	Size	Finishing	Inner Box	Outer Box
BS797	5/8"OD x 7/16"SJ	Chrome	1	100



A-80 UPC Angle Stop Female x OD Compression

Code	Size	Finishing	Inner Box	Outer Box
00792	3/8"FIP x 3/8"OD	Chrome	1	100
00794	1/2"FIP x 3/8"OD	Chrome	1	100
BS798	1/2"FIP x 7/16"SJ	Chrome	1	100



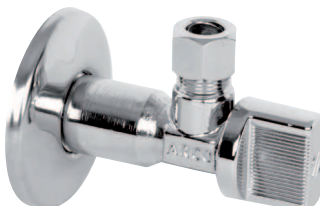
A-80 UPC Angle Stop PEX x OD Compression

Code	Size	Finishing	Inner Box	Outer Box
PEX01	1/2" PEX x 3/8" OD	Chrome	1	50



A-80 UPC Angle Stop Dual Outlet

Code	Size	Finishing	Inner Box	Outer Box
AR9000	1/2"FIP x 3/8"OD x 3/8	Chrome	25	50
AR9005	5/8"OD x 3/8"OD x 3/8	Chrome	25	50

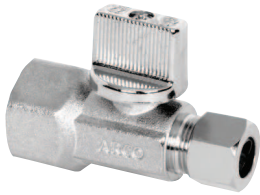


A-80 UPC Angle Stop Male x Male

Code	Size	Finishing	Inner Box	Outer Box
NP794	1/2" NPT x 3/8" OD	Chrome Without Nut	1	100

A-80

ANGLE VALVE, BALL VALVE CLOSURE, PATENTED SYSTEM, PN 16 BAR



A-80 UPC Straight Stop Female x OD Compression

Code	Size	Finishing	Inner Box	Outer Box
10794	1/2" FIP x 3/8" OD	Chrome	1	100



A-80 UPC Straight Stop Valve

Code	Size	Finishing	Inner Box	Outer Box
VA900	1/2" OPVC x 3/8" OD	Chrome	50	50



A-80 UPC Straight Stop Filter

Code	Size	Finishing
10794FIL	1/2" FIP x 3/8" OD	Chrome
10796FIL	5/8" OD x 3/8" OD	Chrome



ELBOW

Code	Size	Nut	Finishing	Inner Box	Outer Box
B3152	1/2" M x 3/8" M	Without Nut	Chrome	25	100
B3150	1/2" M x 3/8" x 10	Short	Chrome	25	100
B3160	1/2" M x 1/2" M	Without Nut	Chrome	25	100



ELBOW Without Rosette

Code	Size	Nut	Finishing	Inner Box	Outer Box
B3156	1/2" M x 3/8" M	Without Nut	Chrome	25	100
B3154	1/2" M x 3/8" x 10	Short	Chrome	25	100
B3161	1/2" M x 1/2" M	Without Nut	Chrome	25	100